



We The People

Becoming an informed and engaged congregation that votes and participates in our democracy!



Who is running for office? STAY TUNED FOR THE FINAL 2020 BALLOT

DEBATE SCHEDULE

2020

Jan – April

Jan 14th - CNN debate

Feb 7th ABS News debate

Feb 19th NBC debate

Feb 25th CBS debate

March & April - TBD

Six more primary debates

Follow the caucus data and debates

July 13th – 16th

Democratic National Convention

August 24th – 27th

Republican National Convention

Sept. 29th in Indiana

1st Presidential

Oct. 7th in Salt Lake City

Vice Presidential

Oct. 15th in Ann Arbor

2nd Presidential

Oct. 22nd in Nashville

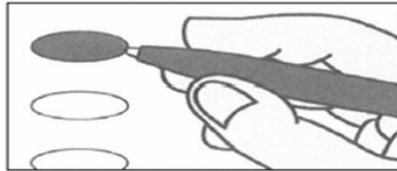
3rd Presidential

★ ★ ★ 1, 2, 3, VOTE ★ ★ ★

How Maryland Votes

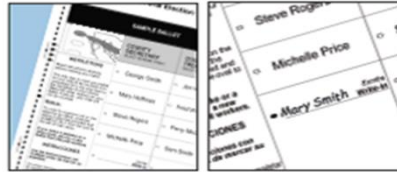
1 Mark Ballot

Mark the oval next to your choice using a black ballpoint pen. To cast write-in votes, mark the oval next to the write-in space, then print the candidate's name.



2 Review Ballot

Review that your ballot is marked correctly. Did you turn it over? There may be contests on the other side!



3 Scan Ballot

Insert your ballot into the ballot scanner. Your ballot can be tabulated in any orientation (right side up, backward, or upside down). A Thank you for voting screen will appear after your ballot is accepted.



Primary Election Dates

General Election - Tuesday, April 28, 2020 7 am until 8 pm

Last chance to register for election and change party affiliation

- Tuesday, April 7th

Early Voting Deadline

- Thursday, April 16th – Thursday, April 23rd (10 am – 8 pm)

Last chance to request an absentee ballot

- Friday, April 24 (8 am) delivered online
- Tuesday, April 28 (8 pm) pick-up ballot

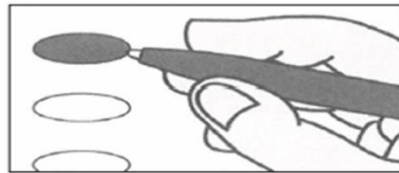
DATES TO REMEMBER!

★ ★ ★ 1, 2, 3, VOTE ★ ★ ★

How Maryland Votes

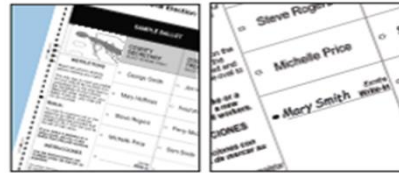
1 Mark Ballot

Mark the oval next to your choice using a black ballpoint pen. To cast write-in votes, mark the oval next to the write-in space, then print the candidate's name.



2 Review Ballot

Review that your ballot is marked correctly. Did you turn it over? There may be contests on the other side!



3 Scan Ballot

Insert your ballot into the ballot scanner. Your ballot can be tabulated in any orientation (right side up, backward, or upside down). A Thank you for voting screen will appear after your ballot is accepted.



General Election Dates

**General Election - November 3, 2020,
7 am until 8 pm**

Last chance to register for election

- Tuesday October 13th

Early Voting for the General Election

- Thursday, October 22nd – Thursday, October 29th (8 am – 8 pm)

Last chance to request an absentee ballot-

- Tuesday October 27th (8 pm if by mail; 11:59 pm if by fax/email) delivered by mail
- Friday, October 30th (5 pm if by mail; 11:59 pm if by fax/email) delivered online

DATES TO REMEMBER!

1. Make sure you are a registered voter
2. Decide how you want to vote- in person or absentee
3. Know the type of machines used for casting a vote in person- accessible voting centers and voting machines are available
4. Locate your voting precinct
5. Know your employer's policy on leave for voting and make necessary arrangements

Before Voting

- **Voter Registration and Absentee Ballot Request:**

<https://voterservices.elections.maryland.gov/OnlineVoterRegistration/InstructionsStep1>

(site has helpful navigation videos)

- **Voter Look Up:** <https://voterservices.elections.maryland.gov/VoterSearch>

- ✓ Review your voter registration record
- ✓ Request a duplicate voter registration card
- ✓ Find out where to vote
- ✓ Find out your voting districts
- ✓ Find out your local board of elections
- ✓ See the status of your absentee or provisional ballot
- ✓ View your sample ballot



- **Polling Place Lookup:** <https://voterservices.elections.maryland.gov/PollingPlaceSearch>

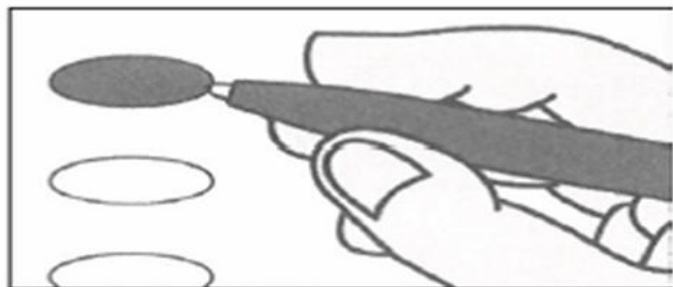
RESOURCES- KNOW YOUR VOTER STATUS

★ ★ ★ 1, 2, 3, VOTE ★ ★ ★

How Maryland Votes

1 Mark Ballot

Mark the oval next to your choice using a black ballpoint pen. To cast write-in votes, mark the oval next to the write-in space, then print the candidate's name.



2 Review Ballot

Review that your ballot is marked correctly. Did you turn it over? There may be contests on the other side!



3 Scan Ballot

Insert your ballot into the ballot scanner. Your ballot can be tabulated in any orientation (right side up, backward, or upside down). A Thank you for voting screen will appear after your ballot is accepted.



1. You can bring one or two children under 18 years old with you to vote.
2. You cannot use your cell phone, pager, camera, and computer equipment in an early voting center or at a polling place.
3. You can bring any printed material - including your marked specimen ballot - to help you vote.
4. Some first time voters in Maryland will be asked to show ID before voting. If you are asked to show ID, please show an election judge one of the following forms of ID:
 - ✓ A copy of a current and valid photo ID (i.e., Maryland driver's license, MVA ID card, student, employee, or military ID card, U.S. passport, or any other State or federal government-issued ID card); or
 - ✓ A copy of a current utility bill, bank statement, government check, paycheck or other government document that shows your name and address. Current means that the document is dated within 3 months of the election.

While Voting

5. When you go vote, you can wear clothing, buttons or stickers with political messages, but you must leave the early voting center or polling place immediately after voting.
6. In a general election, you can write-in the name of a candidate, but in a primary election, you cannot. Instructions on how to cast a write-in vote and a listing of the filed write-in candidates will be posted at the early voting centers and at your polling place on election day.
7. If your employer asks for proof that you voted, ask an election judge for a Certificate of Participation or make-sure you get your “I Voted” sticker.

While Voting

You Can Become:

1. A Challenger or Watcher to ensure a fair voting process is occurring in a precinct on election day
2. An Election Judge to guide/support voters on election day with the voting process
3. Trained to Register Voters before election day

**Don't just
vote—
volunteer.**

VOLUNTEER OPPORTUNITIES

http://www.elections.state.md.us/get_involved/index.html



For more information please contact:

- Rev. Rochelle Andrews – roshav72@hotmail.com
- Rev. Jennifer Gillyard – jgillyard@gmail.com
- Prince George's County Board of Elections Office
1100 Mercantile Lane, Suite 115A
Largo, MD 20774
Alisha Alexander, Election Director
301-341-7300; 301-341-7391 (Fax)
<http://www.princegeorgescountymd.gov/559/Board-of-Elections>
Email Address: election@co.pg.md.us



THANK YOU FOR VOTING!





“
**THE VOTE IS PRECIOUS.
IT IS ALMOST SACRED.
IT'S THE MOST POWERFUL NON-VIOLENT
TOOL WE HAVE IN A DEMOCRATIC
SOCIETY AND WE'VE GOT TO USE IT.**

”
JOHN LEWIS
AUGUST 24, 2013

*history
has its
eyes on
you*
-Hamilton




**The ballot is stronger than
the bullet.**

ABRAHAM LINCOLN



Richard Allen



The Lord was pleased to strengthen us, and remove all fear from us, and disposed our hearts to be as useful as possible.

AZ QUOTES